

User Manual

Contents

A .Installation Guide	1
B. Hardware Connection.....	1
C. Software installation	2
D. Software Application instruction	3
1. Capture	5
2. Whiteboard	11
3. Image Contrast.....	13
4. Visual presentation.....	14
5. Others assistant functions	19
6. Image Editing	23

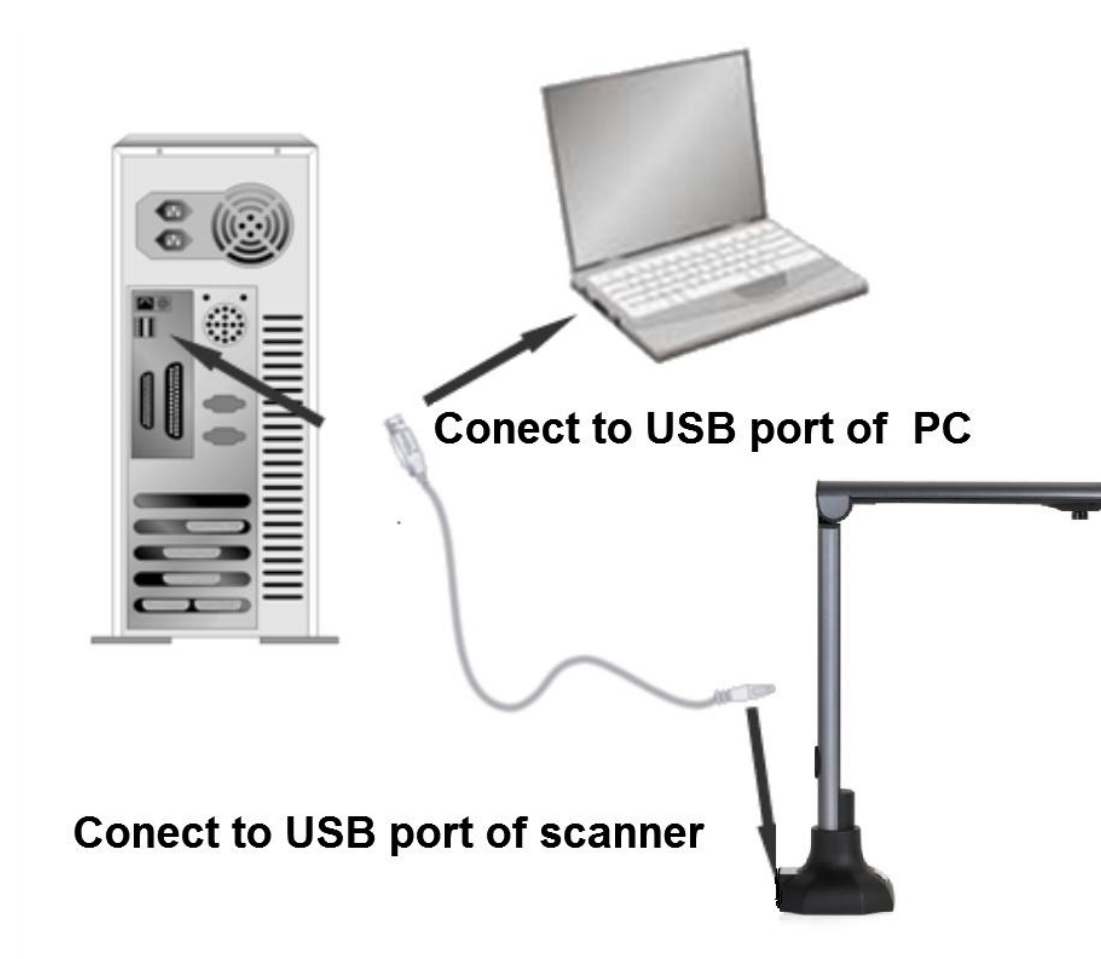
Product Installation

A. Hardware Connection

Cam scanner is connected with PC by USB cable.

After connection, the PC will find the hardware and install driver automatically.

Pls kindly make sure the USB port of PC is working! Or the scanner can not work properly due to this matter!



B. Software Installation

(The main Software will around 200MB hardware space. To make sure you have enough space for installation and scanner working properly, pls remain 1GB hard-disk

space.)

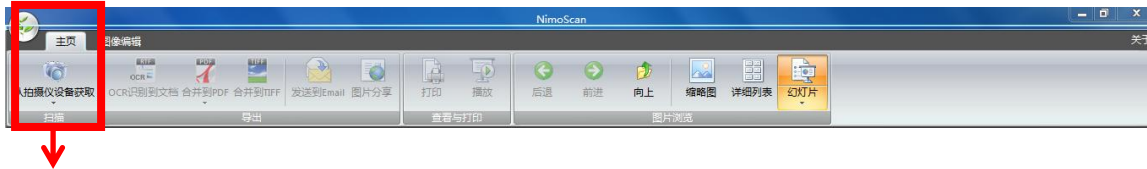
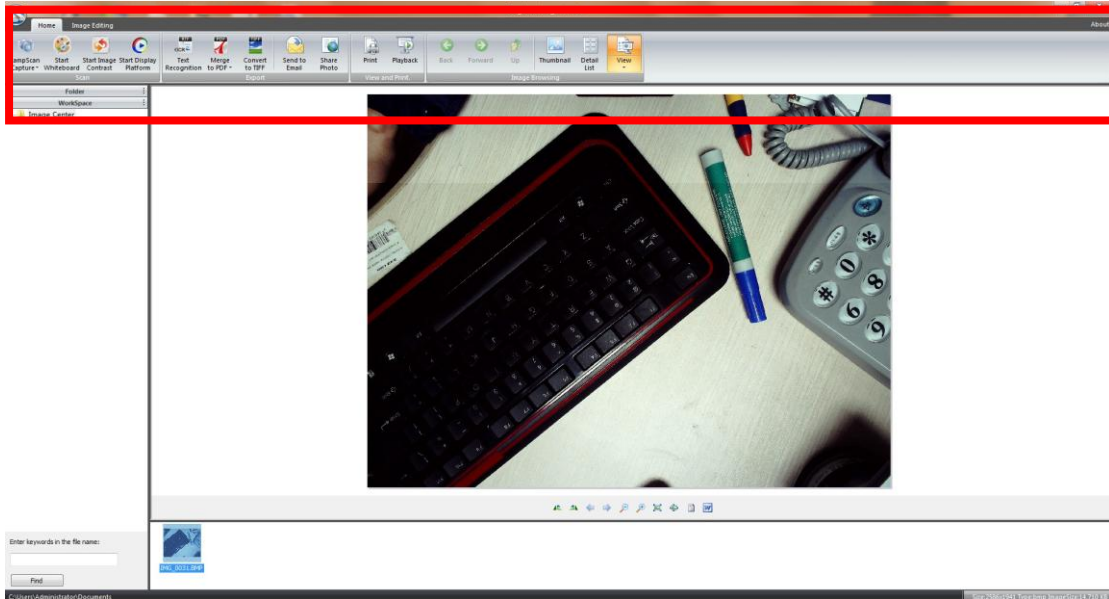
In the packing of the scanner,there is a CD. Run the CD in PC,it will pop up(or double click to pop up) a window as below:



Then pls click "Install scan App" to install the Main software.

C. Software application instruction

The Main software have a sum of buttons for different functions and operations. According to you need to choose them.here is the instruction as follow:



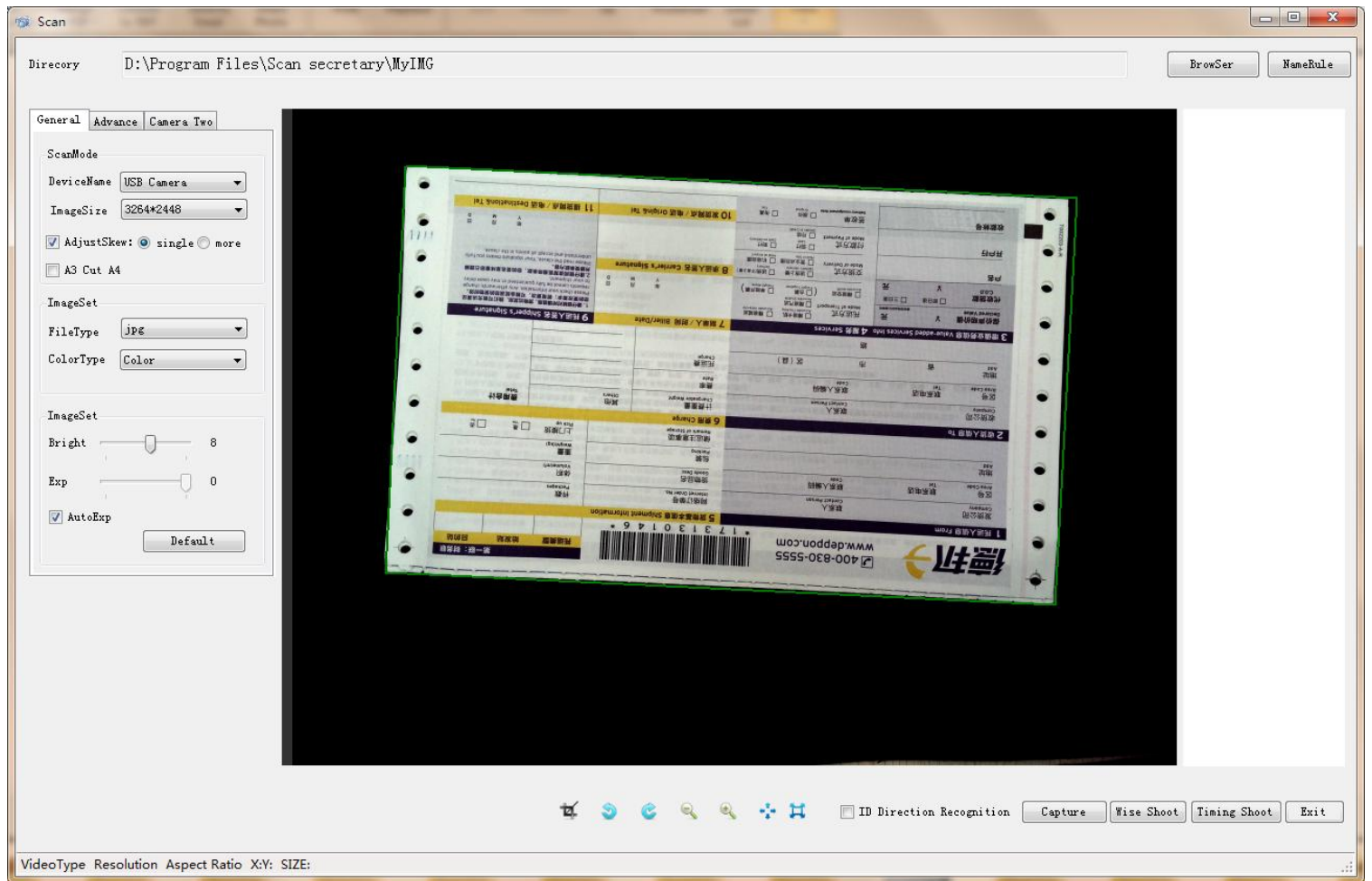
Above tool bar including functions as follows:

1.Capture

Click **【Lampscan Capture】** ,



Then it will pop up below window:



Prepare your document under the scanner. There will be detect green line to catch your document size. And before scanning, you may need to adjust below data according to your requirement. Device, resolution, image format, file type etc...

General Advance Camera Two

ScanMode

DeviceName USB Camera

ImageSize 3264*2448

☒ AdjustSkew: ☐ single ☒ more

☐ A3 Cut A4

ImageSet

FileType jpg

ColorType Color

ImageSet

Bright 8

Exp 0

☒ AutoExp

Default

This software support several camera device,you can choose them according to your need.

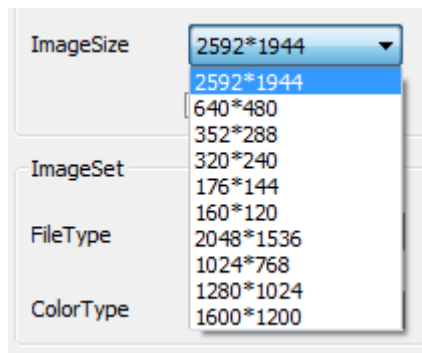
ScanMode

DeviceName Kinghun cam scan

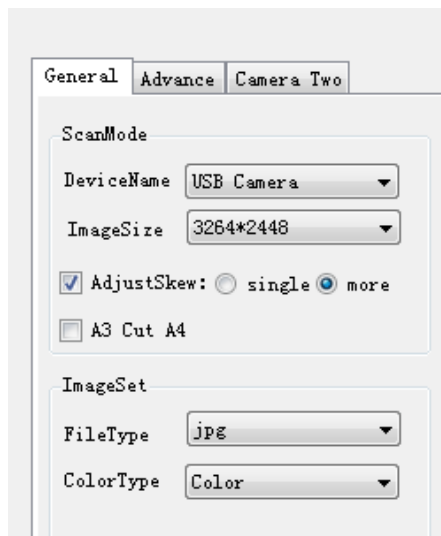
ImageSize Kinghun cam scanner

USB Camera

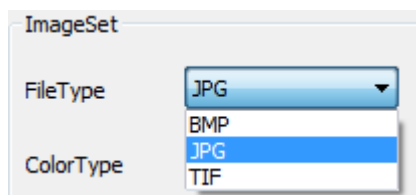
And you can select the resolution:



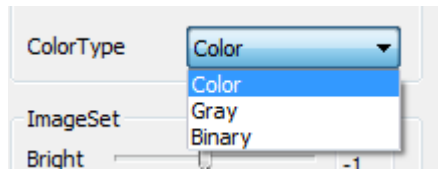
Multi Cards scan in the same time:



And Scan to different image format:



For the scan type,you can get different color image color,gray,binary by choose scan mode:

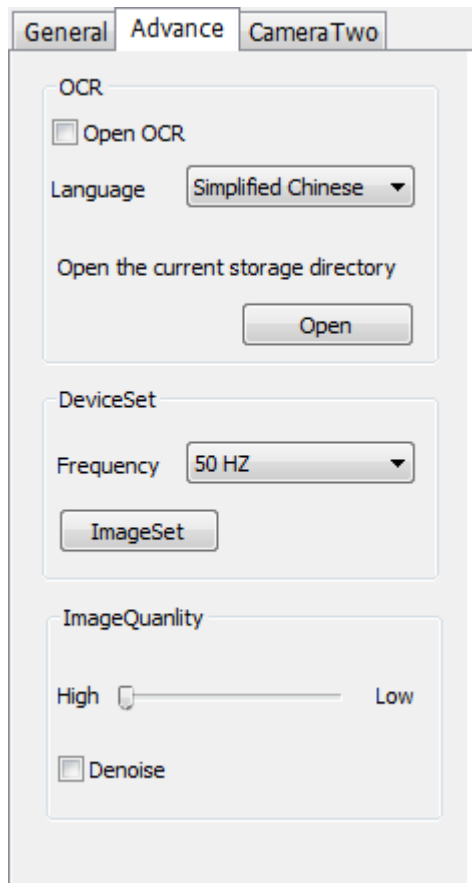


For the most case,image may contain extra border out of the document,this function would help to cut these borders and correct the image.

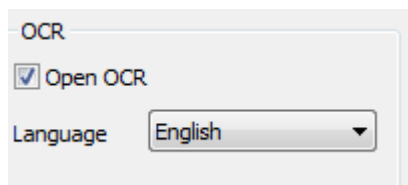


when you scan a ID card,however you put the ID card, click left "ID Direction Recognition",it can turn the ID card image to the right direction according to the owner face on the ID card.

Advanced functions



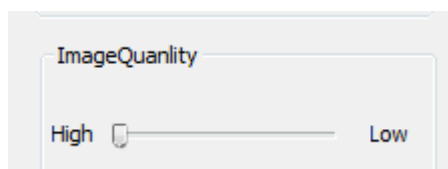
You can use a fast OCR here.



Click on it, and choose Language, then scan. It will come out scanned image and word format after OCR directly.

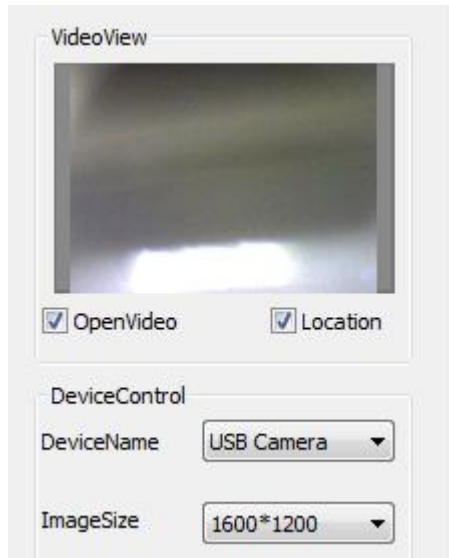
Image compression

According to you need, you can adjust the compression rate(higher or lower) to have a proper size image for you.

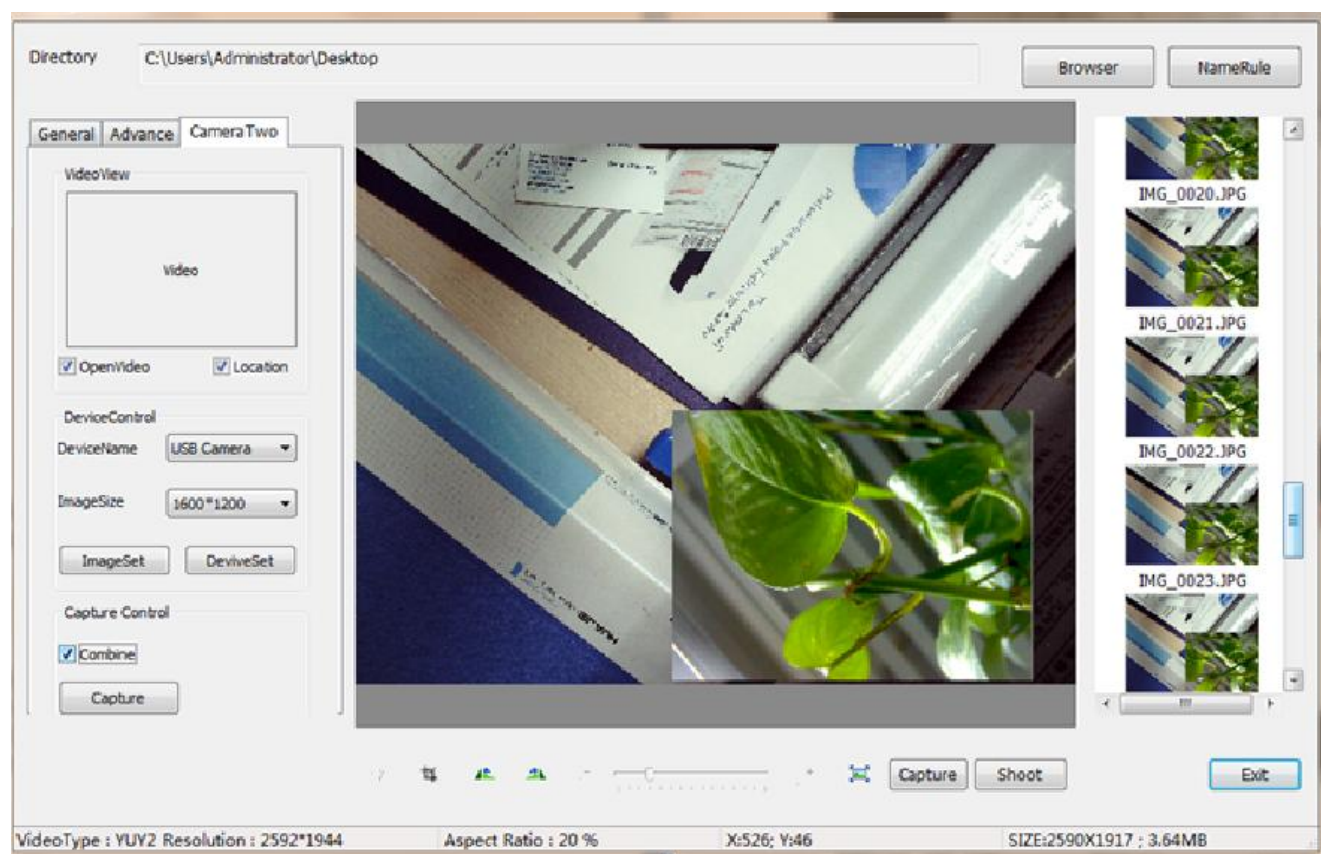


Camera Two

Here it support double camera displaying. When you are opening main camera, you can add one more camera. Pls click below and choose according camera showing, and also resolution.



Then it will show as below window.



Click "Combine" then press main camera "capture" to have a combined image.

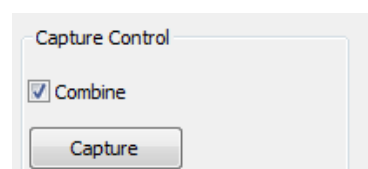


Image preview

This software support image preview during scanning for user's convenience which traditional scanner can not. Below pls see the tools:

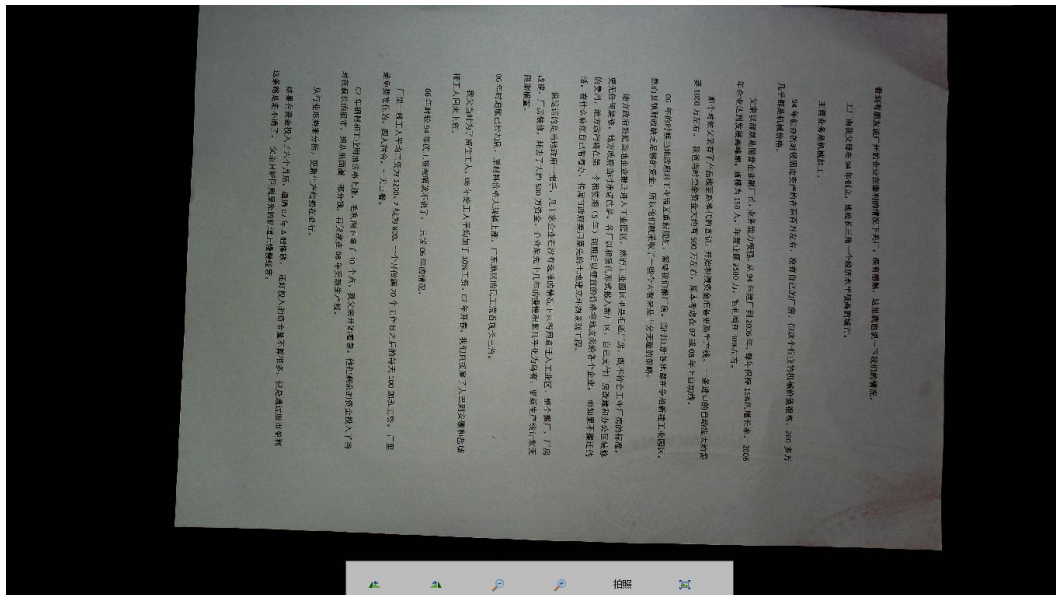


1. Catching and moving hand.
2. Capture specific zone.
3. Right rotation.

4. Left rotation.
5. Zoom in and Zoom out.
6. Full screen

Full screen

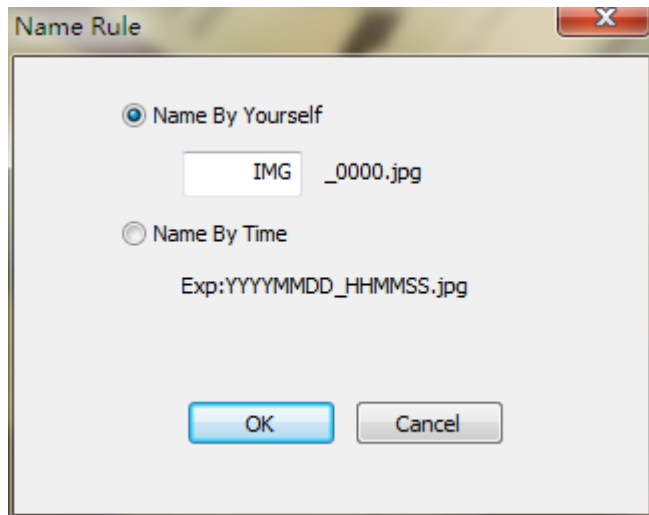
To fit video displaying and visual education by scanner,this software support full screen to larger the screen for user to show operation under scanner:



File named setting

To make convenience for user to do document management,this software support to name the scanned image by user need. User can set the Name rule by going into "Namerule":



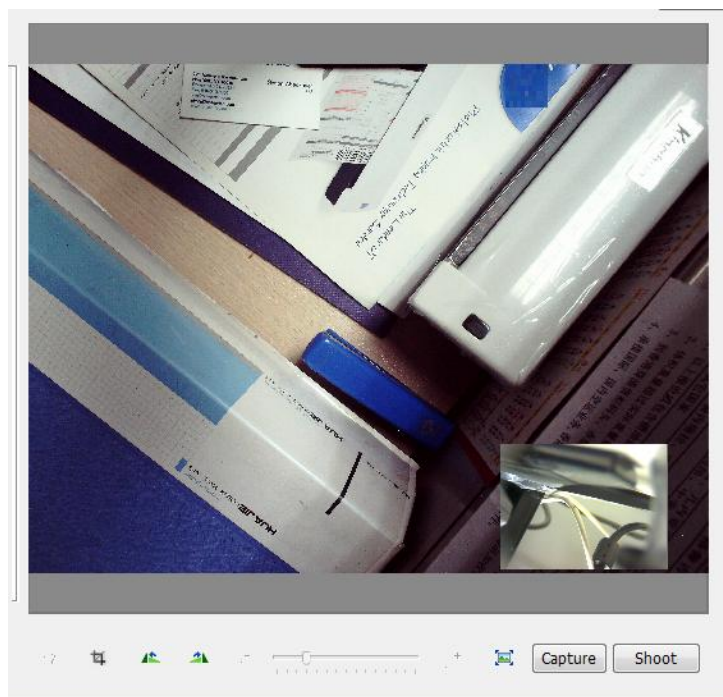


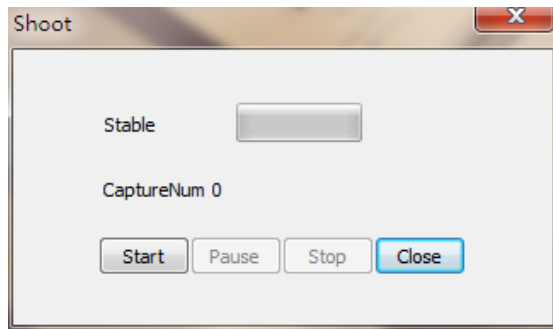
Named by time or designed by yourself.

Continuous Capture

To make scan faster when user have a sum of documents for scanning.

This software support continuous capturing. Click "shoot" button, click start, when you put the paper in the screen, this software will detect the paper automatically and scan:









2. White board

Click "Start whiteboard" to start whiteboard.





Then, it will pop up one tool bar on left as follow:




1.  click to close the whiteboard window.
2.  click to leave whiteboard status, click again to come back whiteboard status.
3.  for drawing 


4.  for drawing 

5.  for drawing 

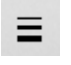





6.  for hand drawing


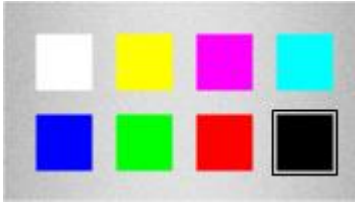
,and it will disappear after 3 seconds.

7.  Eraser for above drawing.

8.  for deleting above drawing.

9.  for selecting the size of line. 

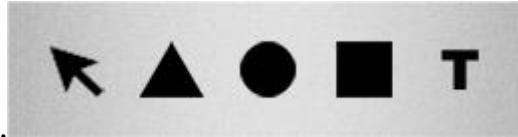
10.  for selecting line style 


11.  for selecting color 

12.  for adjusting transparent rate

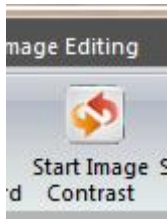


13.  for drawing different shape.

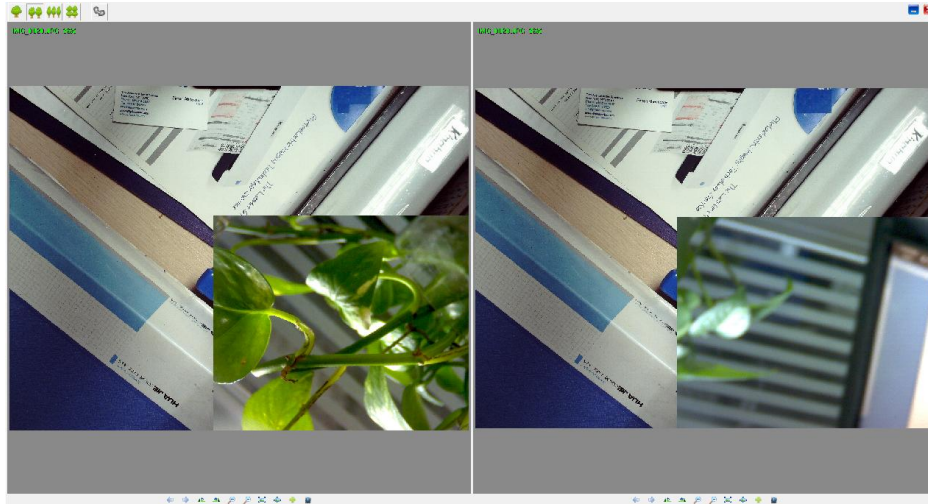


14.  to save above change.

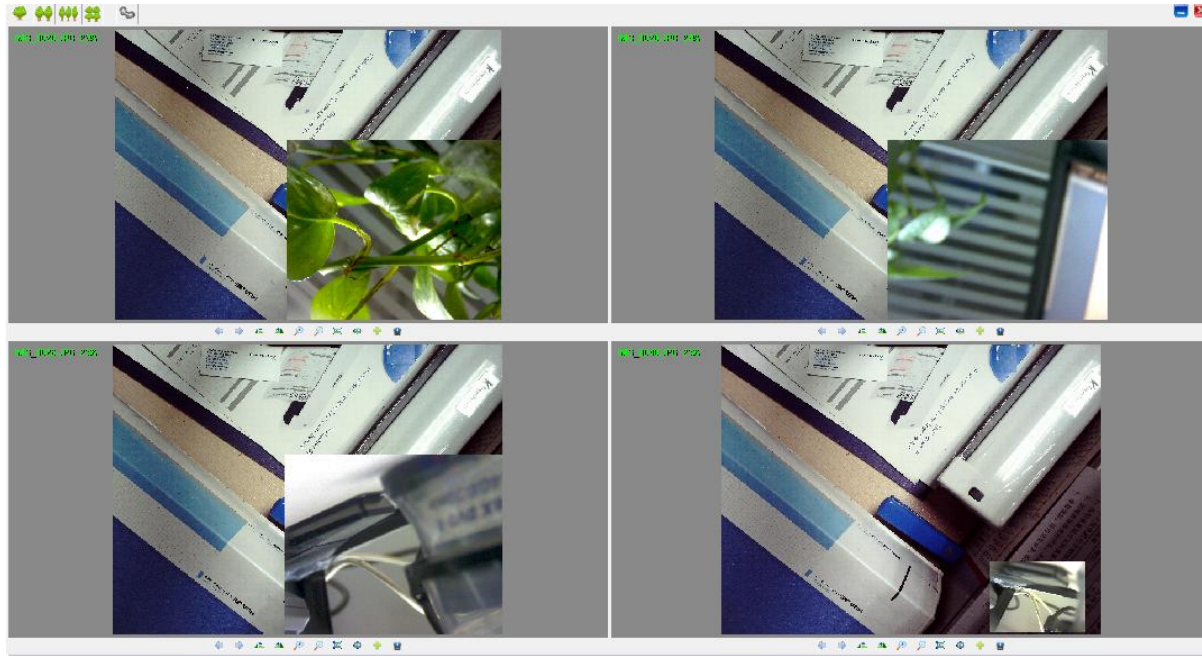
3. Image Contrast



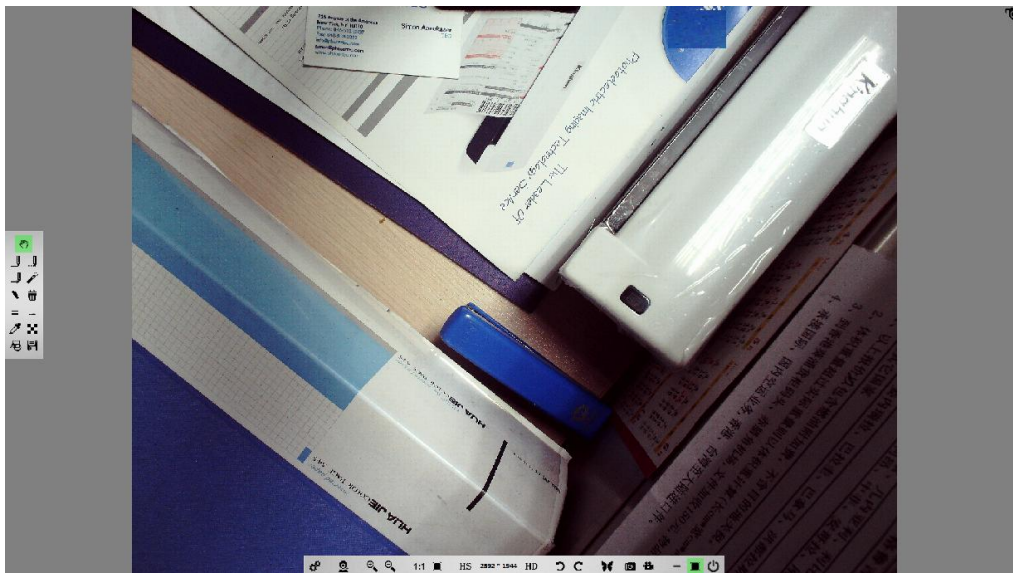
Click "start image Contrast" to compare image



You can select here the Number of image for comparing (Max 4 pictures.)




4. Visual presentation:




Then, it will pop up one tool bar on left as follow:





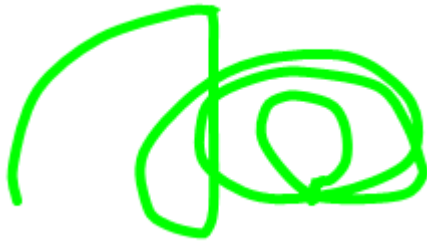
15.  click to close the whiteboard window.

16.  click to leave whiteboard status,click again to come back whiteboard status.


17.  for drawing 

18.  for drawing 


19.  for drawing 



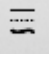
20.  for hand drawing ,and it will disappear after 3 seconds.


21.  Eraser for above drawing.


22.  for deleting above drawing.

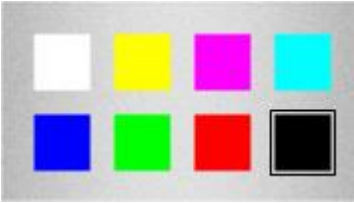
23.  for selecting the size of line.




24.  for selecting line style




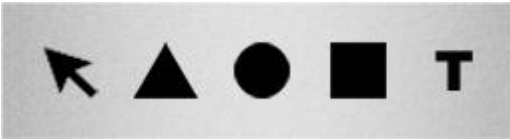
25.  for selecting color




26.  for adjusting transparent rate



27.  for drawing different shape.



28.  to save above change.

And there is another tool bar under the screen for Kinghunshow as below:

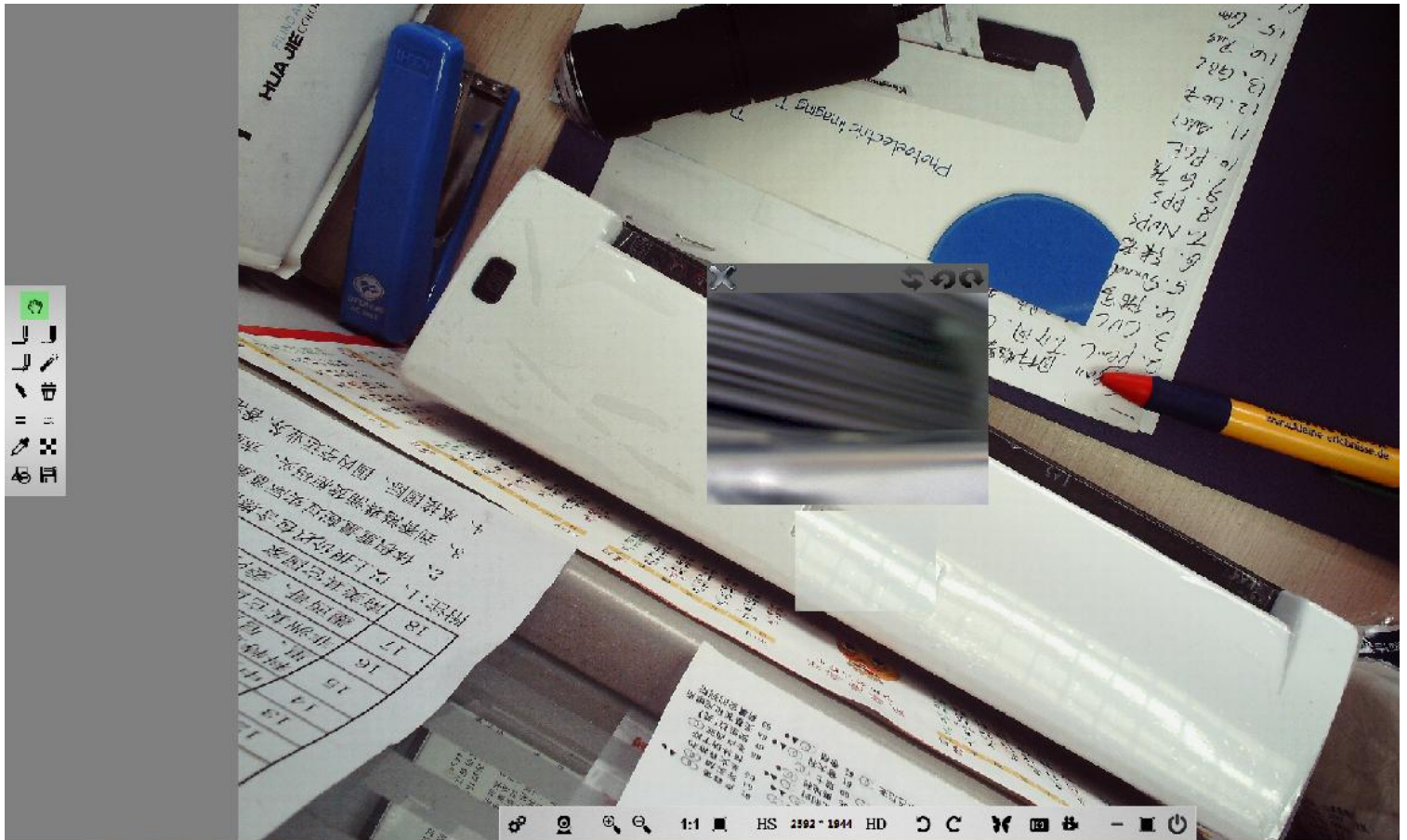
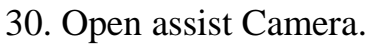


29. Adjust the setting data to control the video effect. Here you can adjust brightness, Contrast, Saturation.

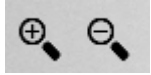
Directory : setting the save path of picture took and videos recorded .

Device list : to view exist device and select accordingly.

Video freeze and Video play : stop playing and replaying video.



31. Zoom in and Zoom out.



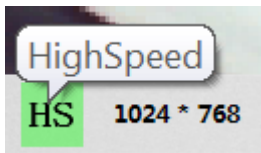
32. 1:1 show full fit.



33. Best suitable window.



34. High speed showing, click it to change the resolution to 1024*768 .



35. High quality showing, click it to change the resolution to 2592*1944



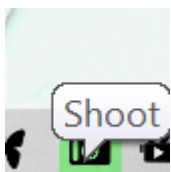
36. Left and right rotate the screen.



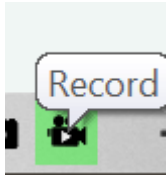
37. Turn to KinghunView to compare the picture you took.



38. Take picture.



39. Record video.



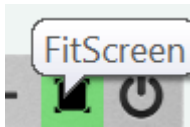
It will pop up a window after recorded.



40. Minium the window.



41. Full screen showing.



42. Close video presentation.

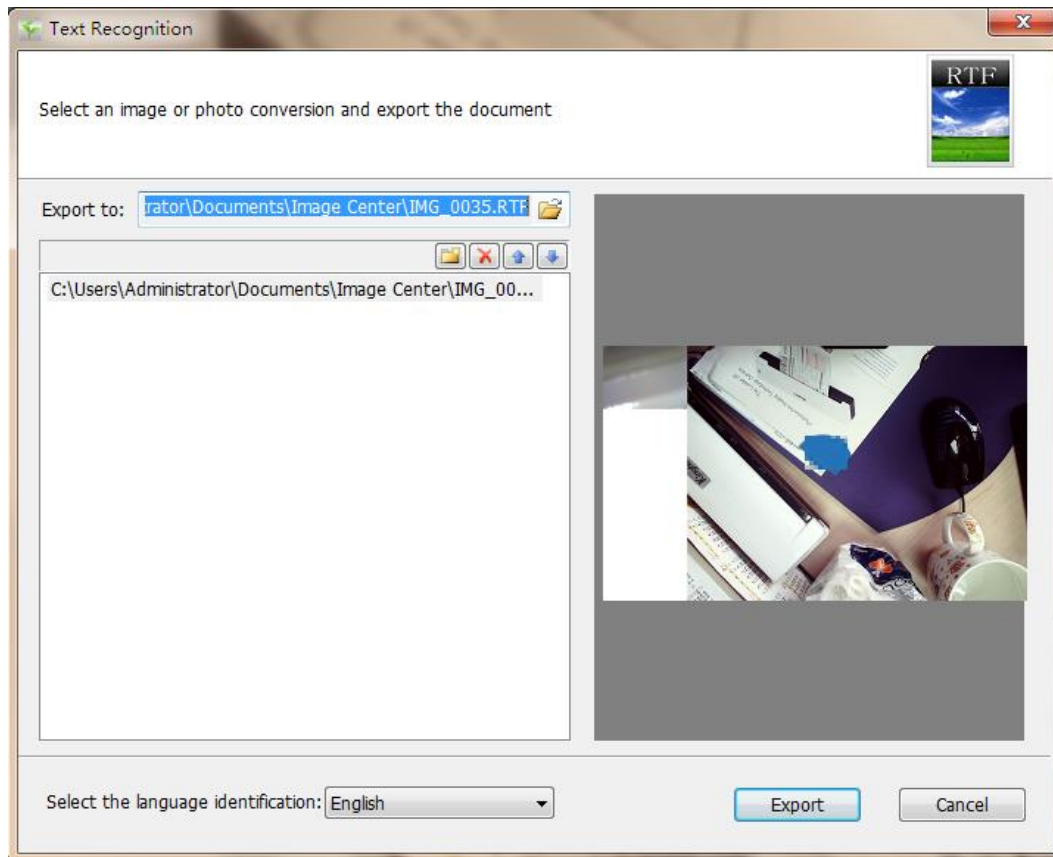


5. Others assistant Functions:

43. Faster OCR.



Click it to Fast OCR as below:

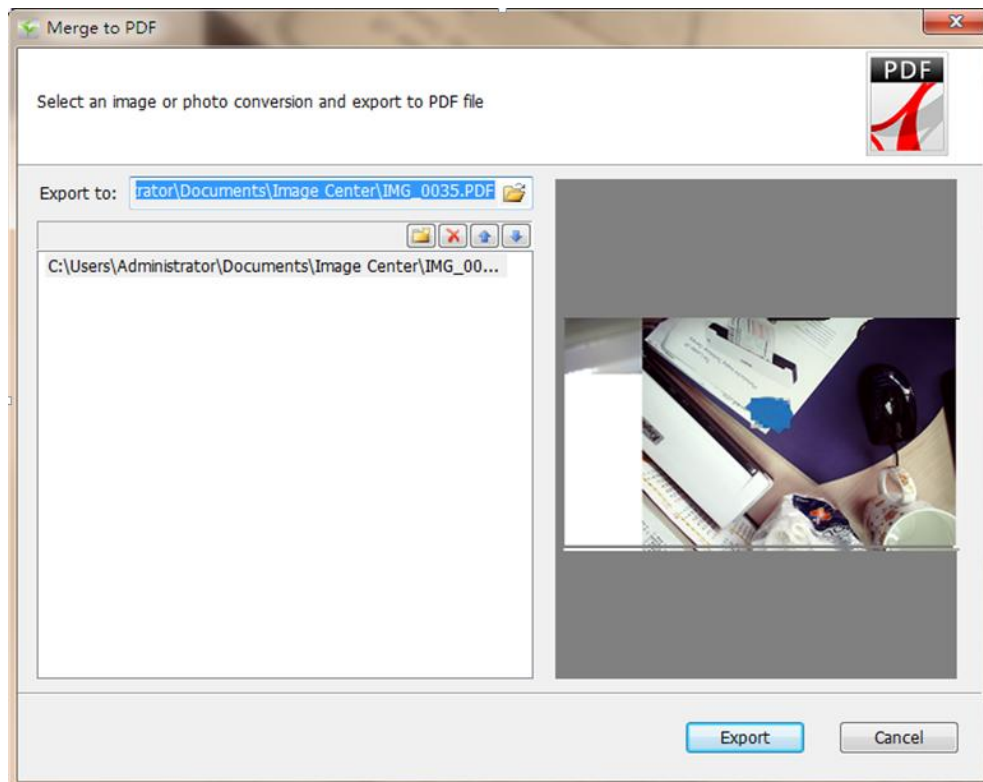


Choose images and language to fast OCR.

44. Merge pictures into PDF



Click it to have below window:

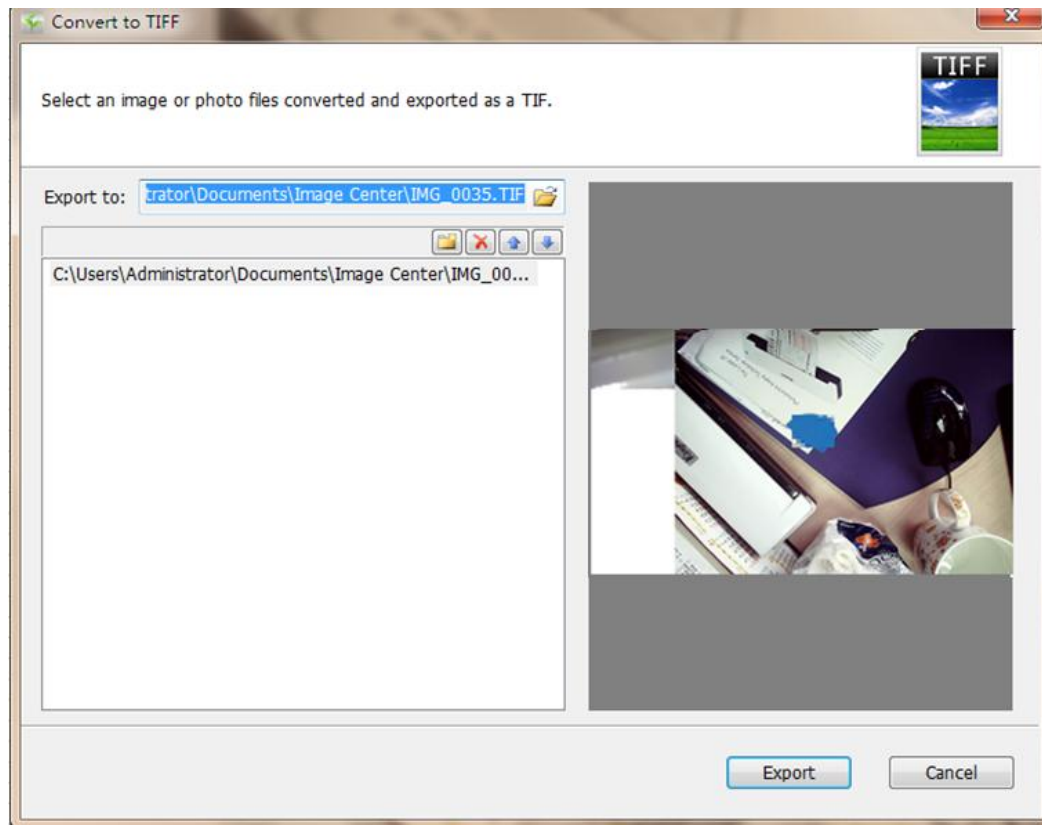


Choose images to merge into PDF.

45. Merge pictures into TIFF.



Click to have below window:



Choose image to convert into TIFF.

46. Send email.



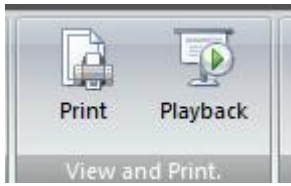
Send picture by email with Outlook.

47. Share pictures.



Share Picture to Iphone

48. Print and playback

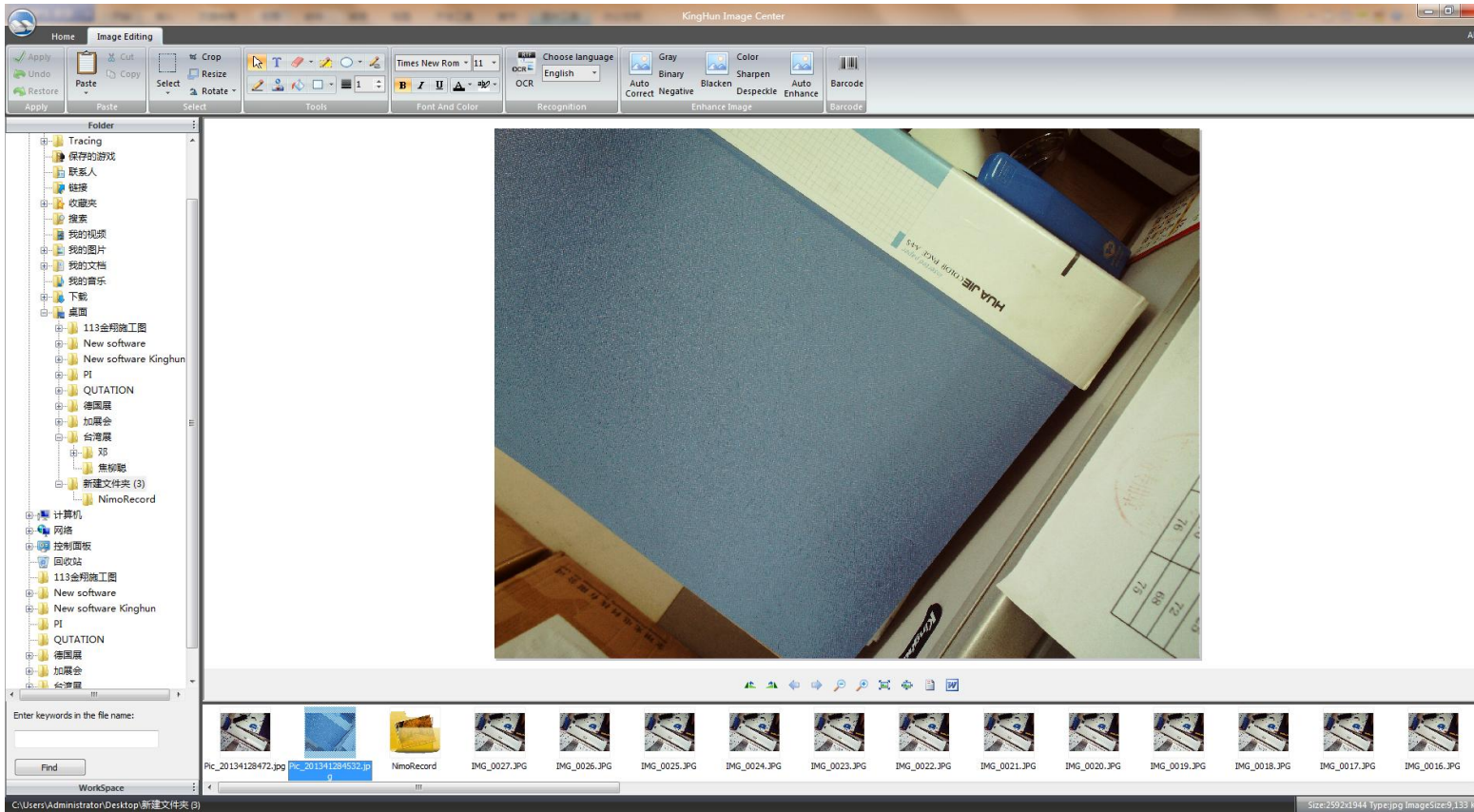


49. Image

browsing:



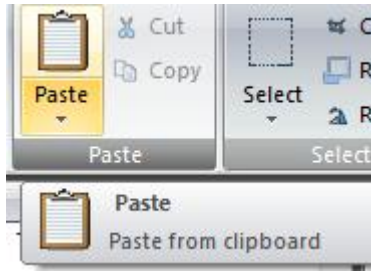
6. Image Editing



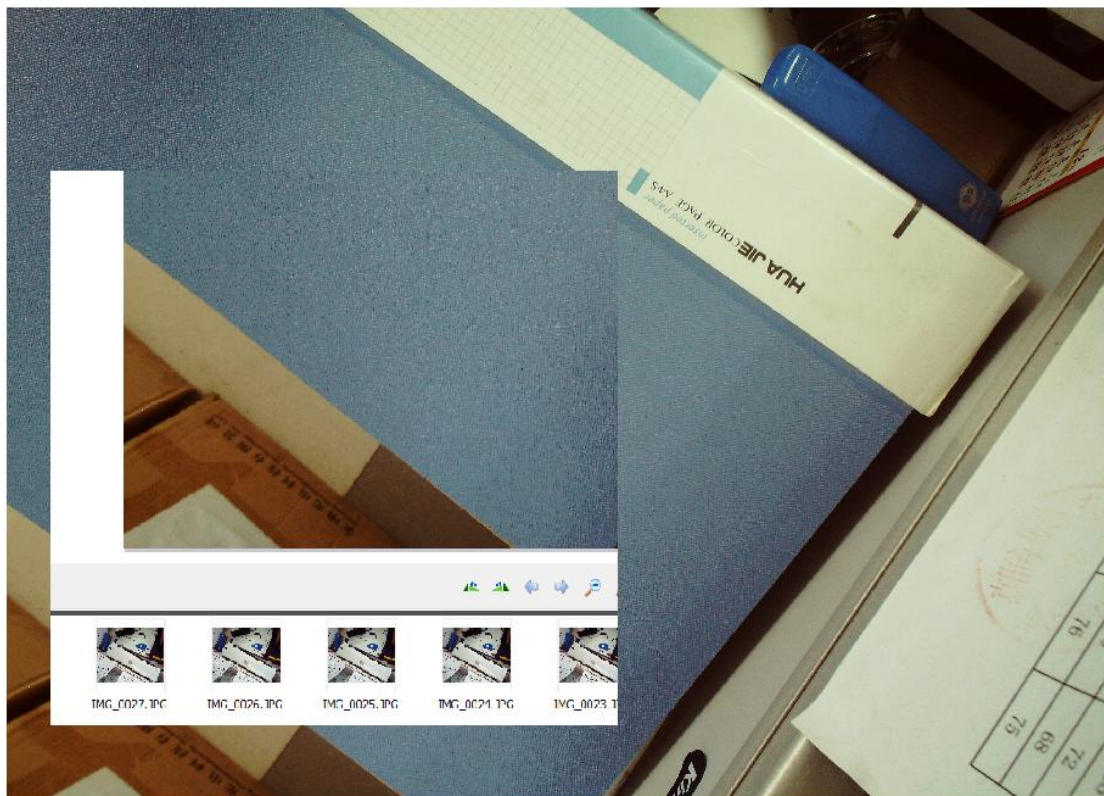
There is the Tool bar as below:



1. Paste



Paste the captured image to combine to the main picture, as below:



2. Select



Click and Draw it on a specific zone of the picture being showed, as below:



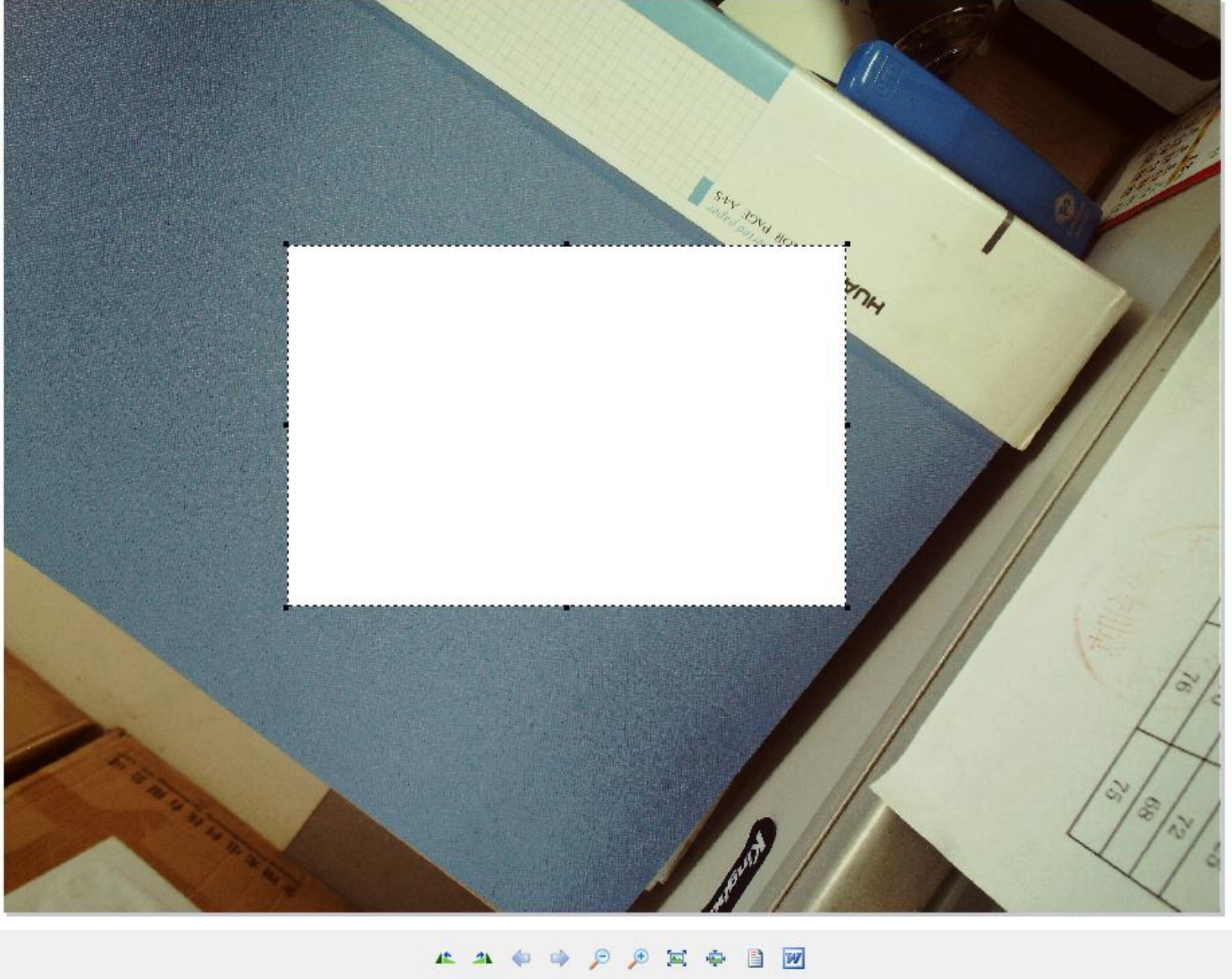
Double click to cut it.



And select cut and copy for this specific zone:

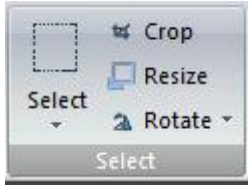


Cut:



Click "copy " to cope this zone.

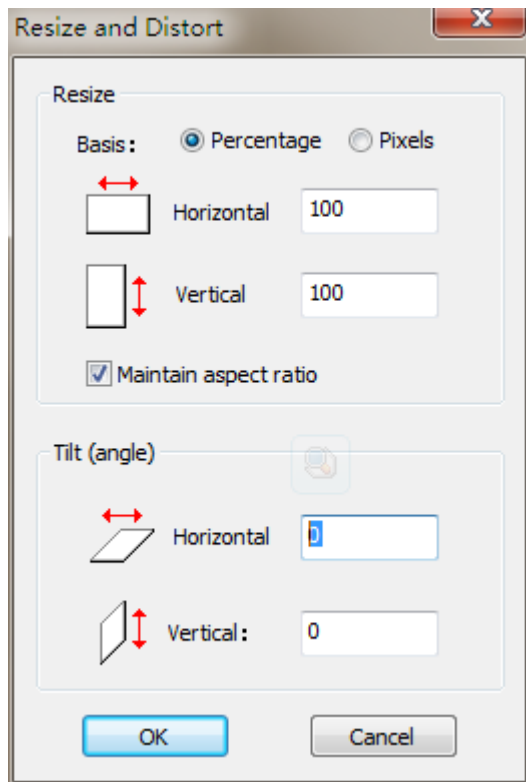
Crop & resize & Rotate :



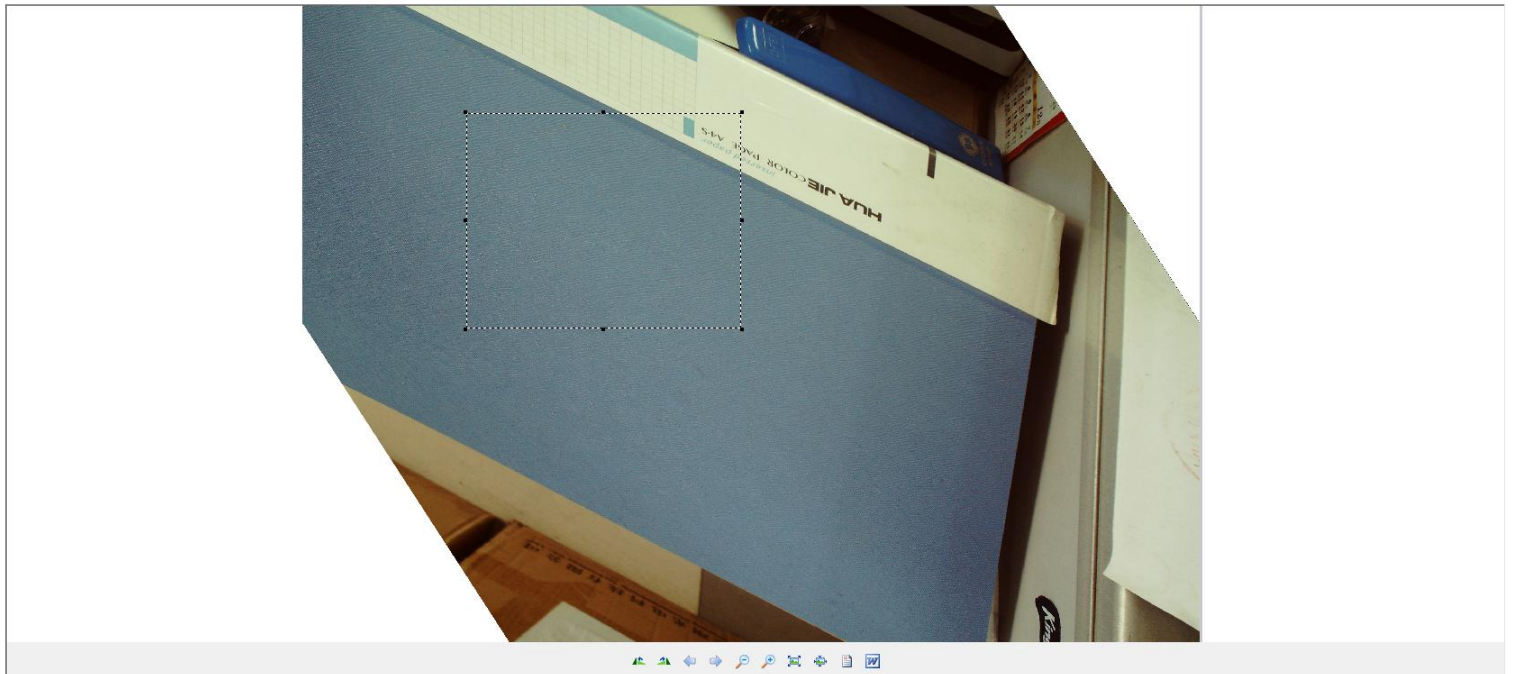
Crop : to cut the specific zone select as below :



Resize : to have below window:

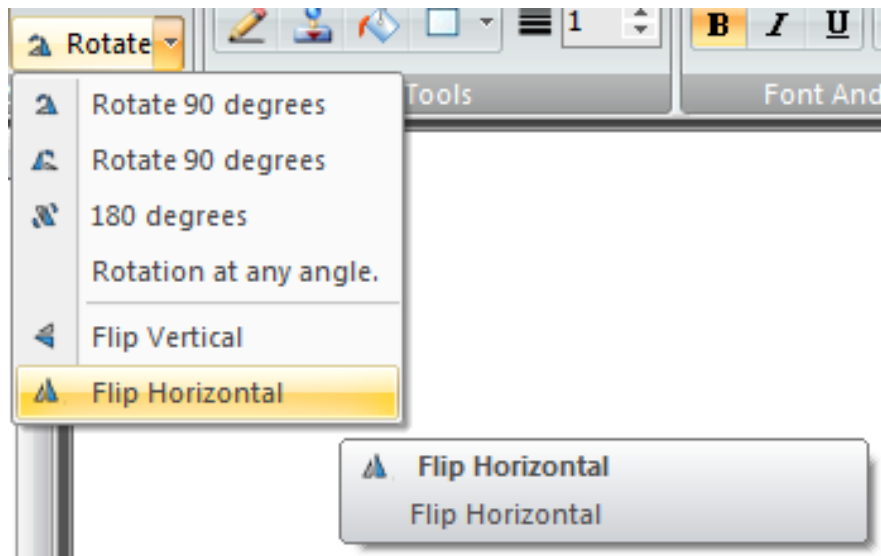


Choose the percentage of size of the image, and to make image tilt or Angle on the particular degree. As below:





Rotation :

See below specification to select them to rotate the image.



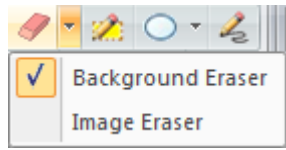
The second part:



1.  to be a hand to catch and move image.
2.  to enter words:

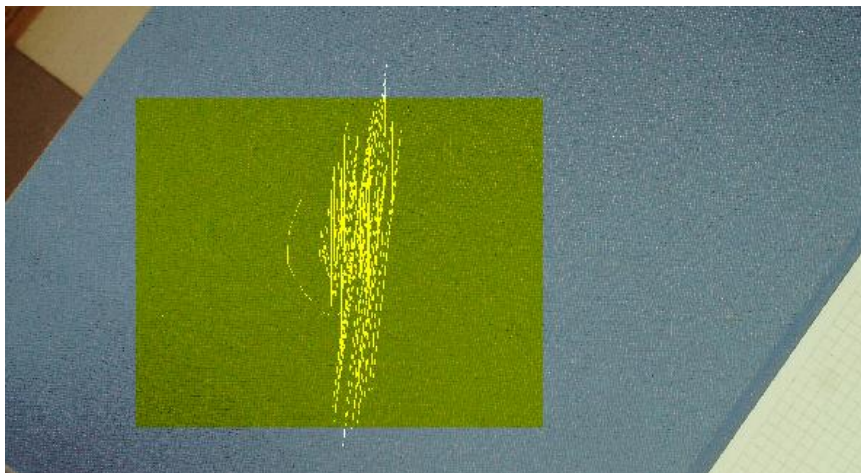


3. Eraser



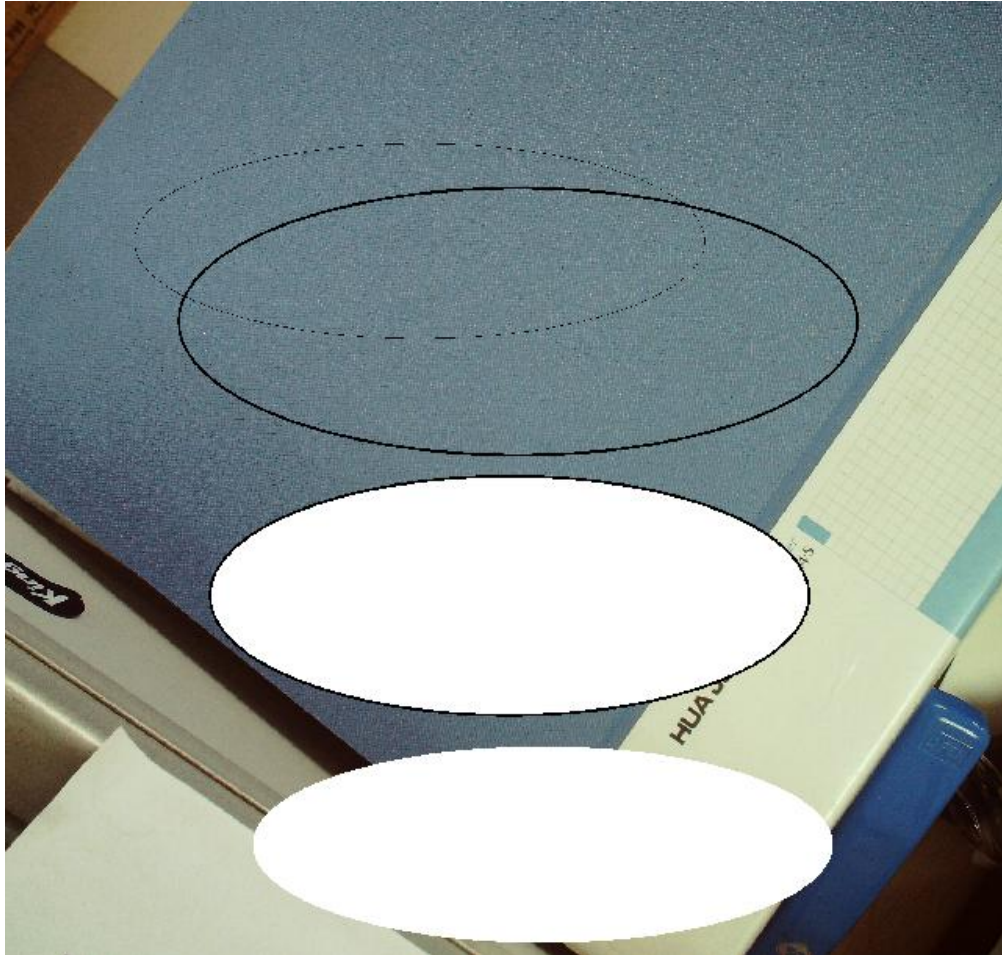
Click to clean the color to white.

4. Highlight shadow:

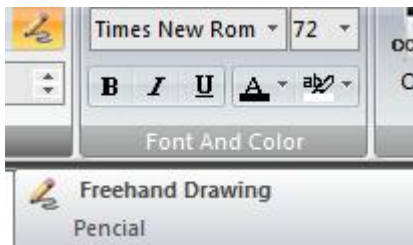


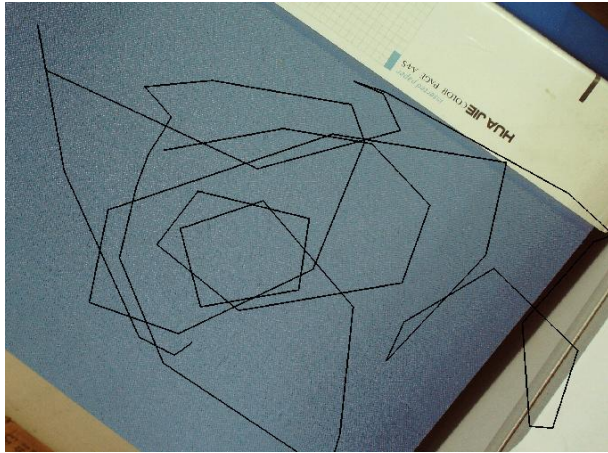
Click it to select a specific zone to be highlighted.

6. Draw ellipse.

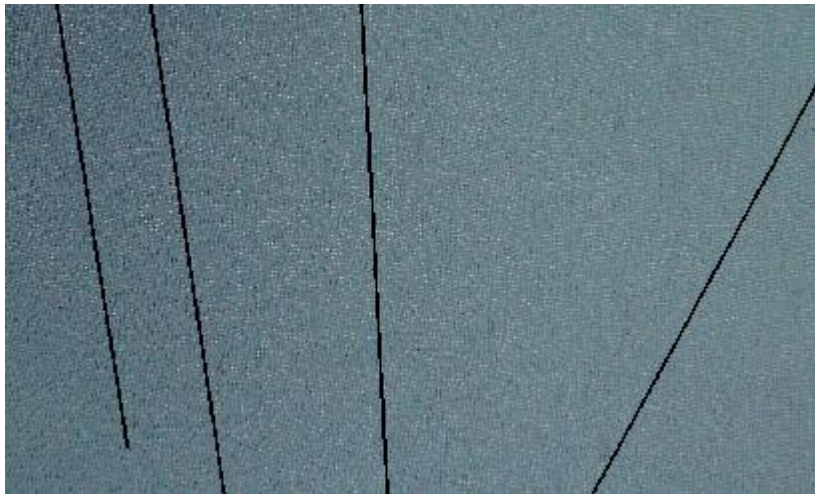
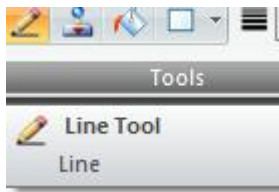


7. Hand Drawing.

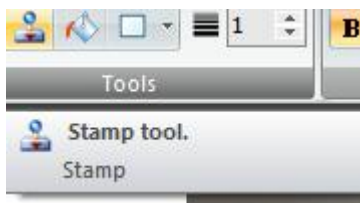




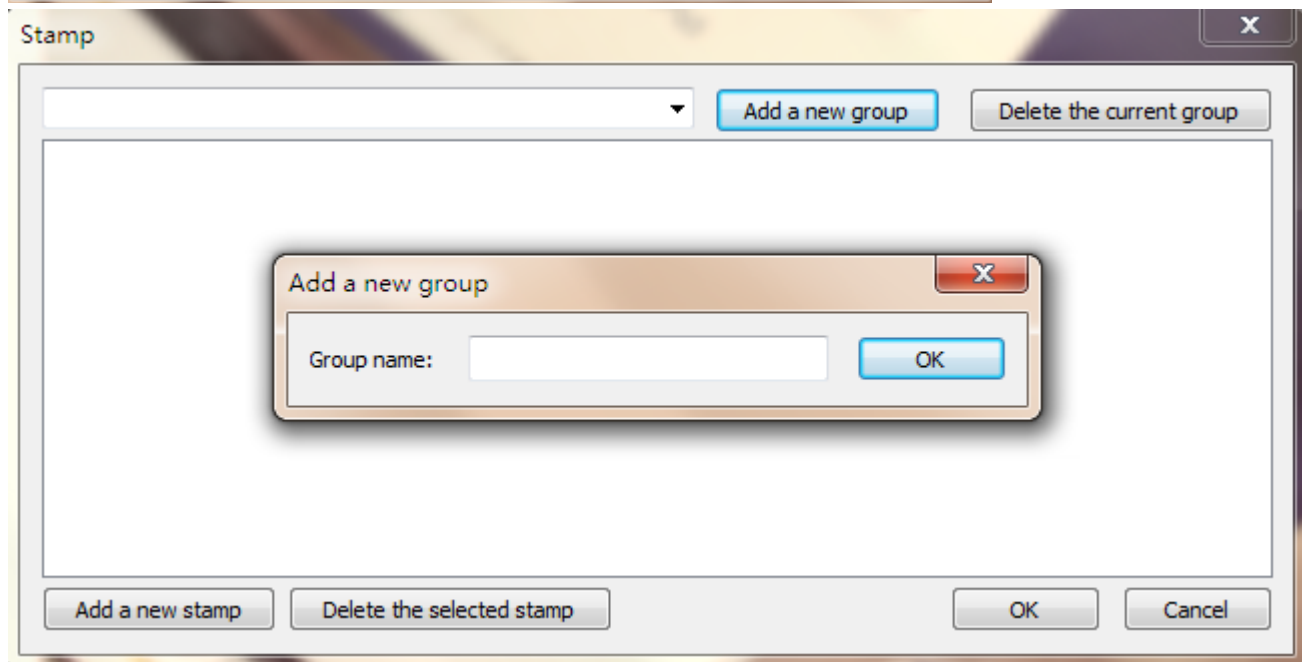
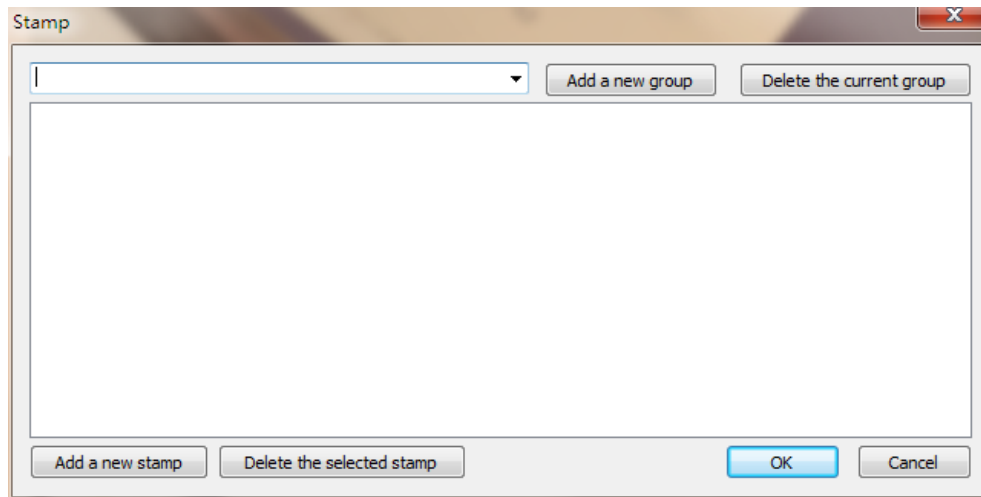
8. Draw a straight line.



9. Stamp tool:

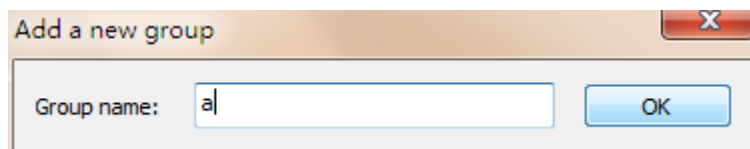


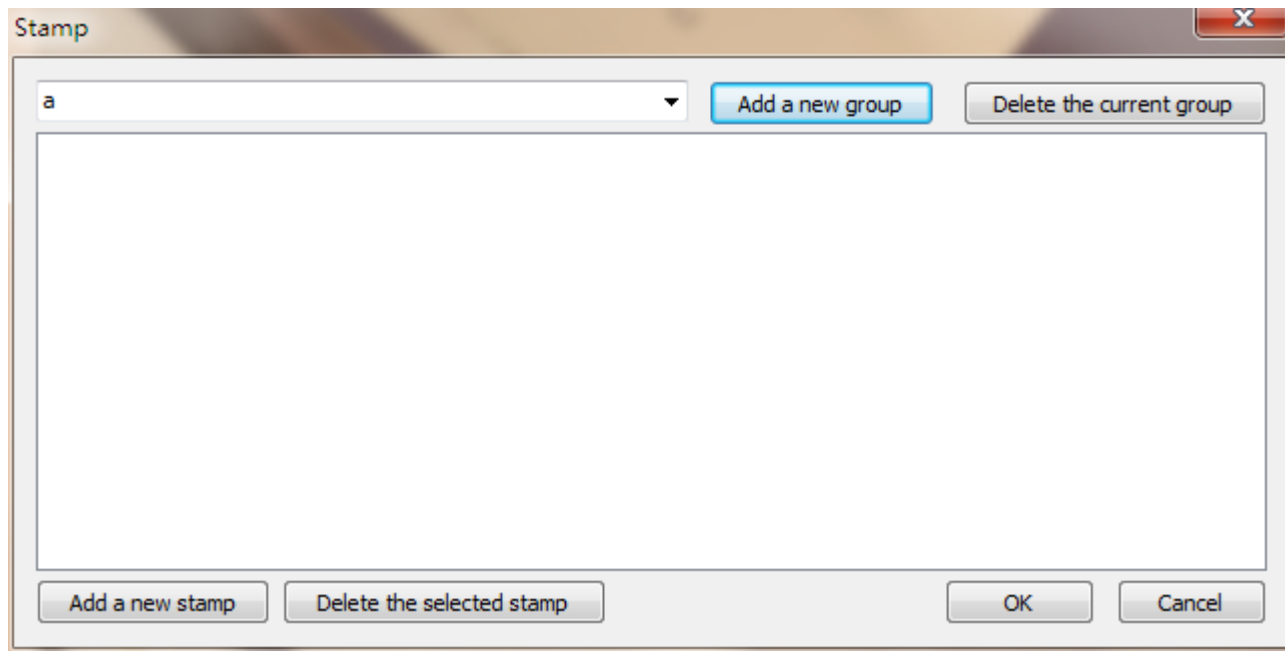
Click it to have below window:



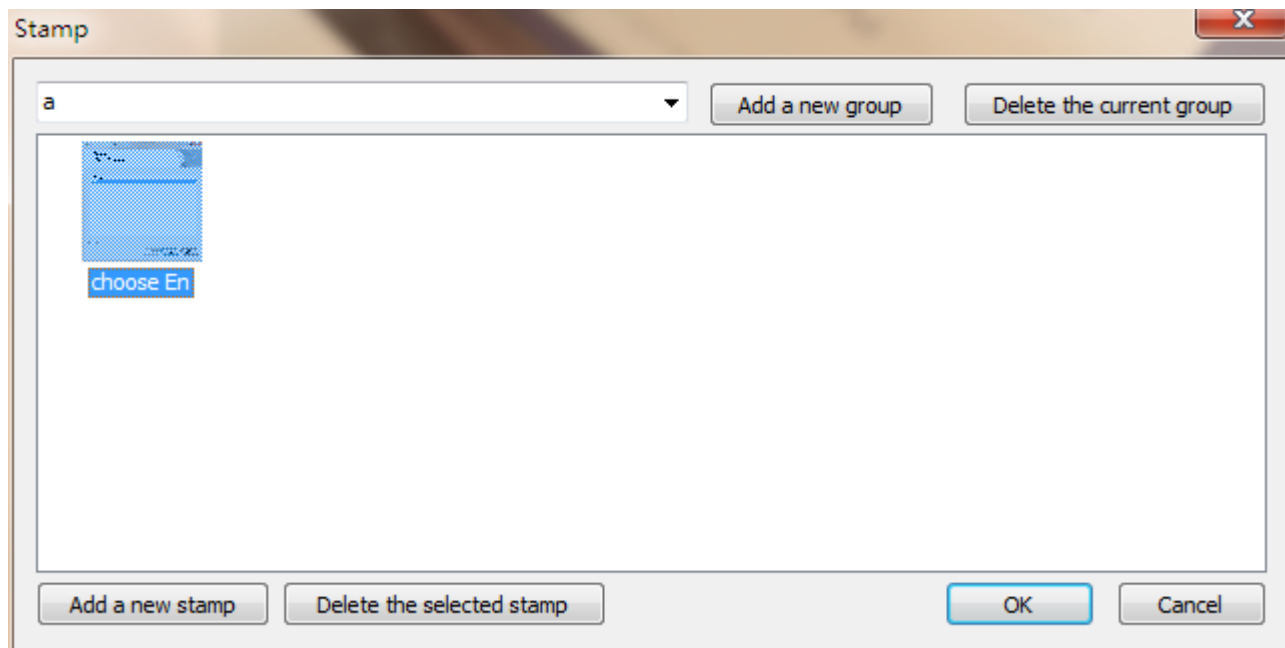
Click Add a new group.

Enter the name and OK. The software will keep your group.

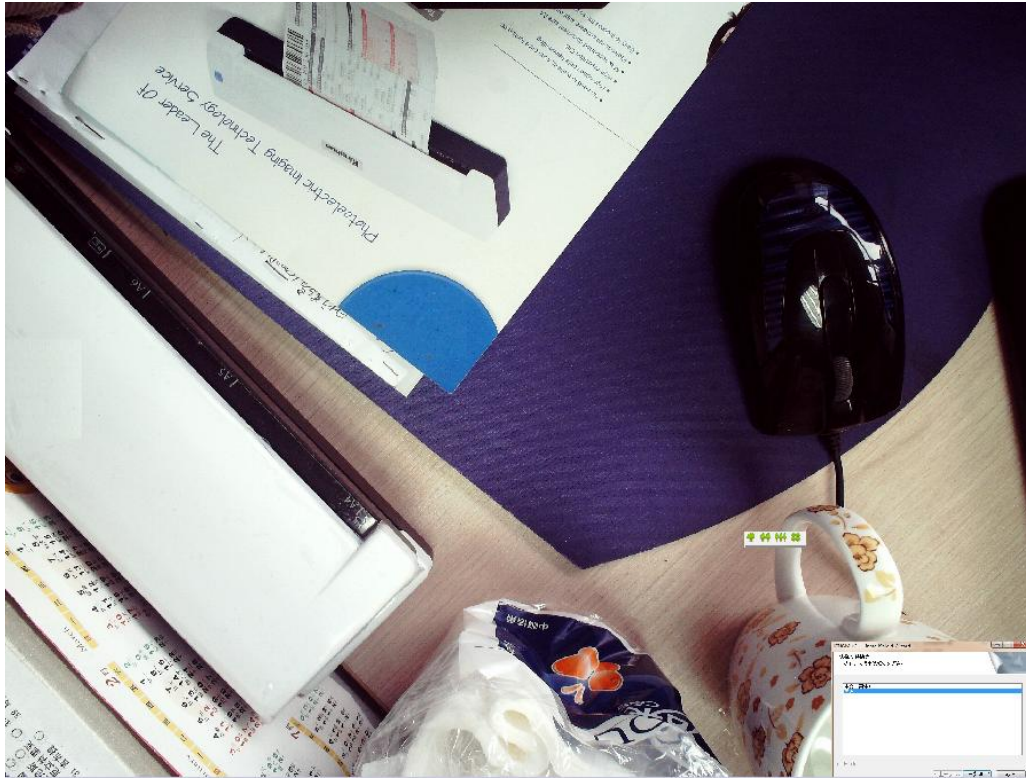




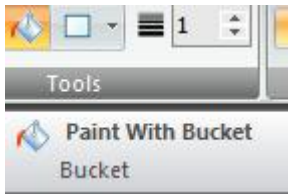
Then add a new stamp:



Click this new stamp, and press "OK", then the stamp will appear at the edited image:



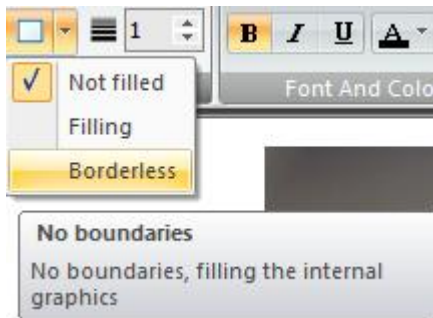
10. Paint with Bucket:

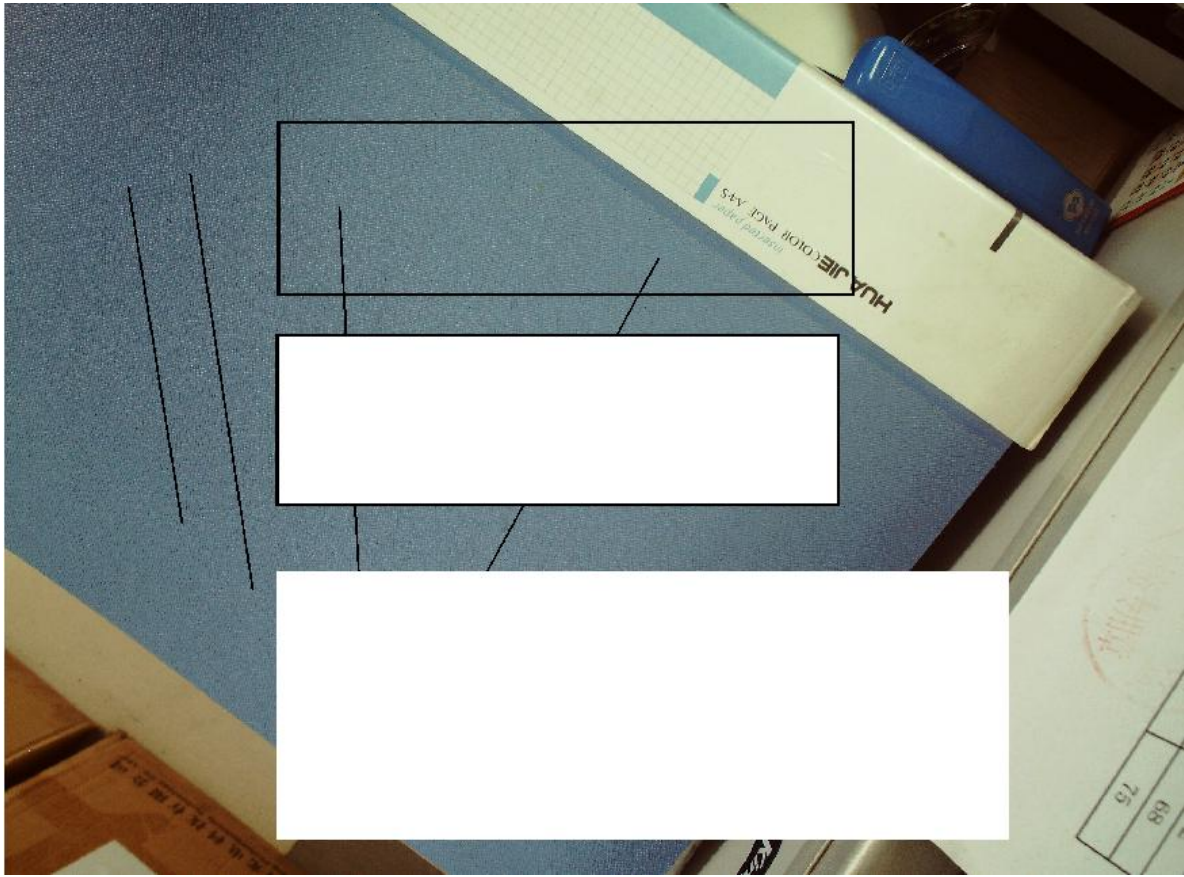


Choose the color and paint the pictures.



11. Draw Rectangles:





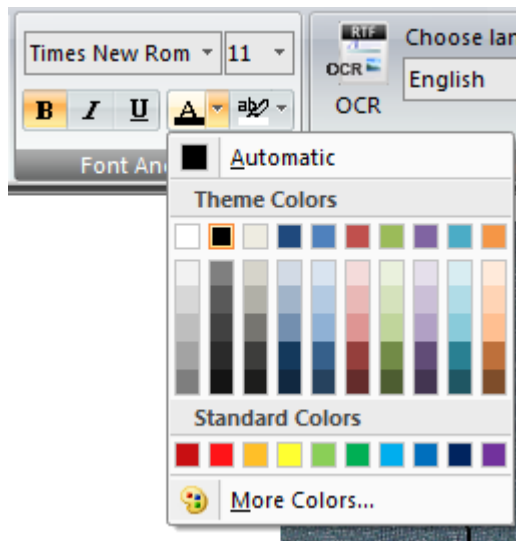
12. Line Size:



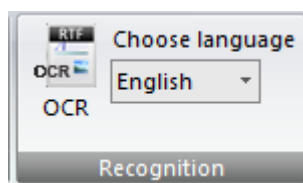
Here is to adjust the size of line of drawing:



13. Click here to Edit the words entering and color of line.



14. To have fast OCR here, same as above fast OCR.



15. Auto correction:

The Leader Of
Photoelectric Imaging Technology Service

KS3A03

Technology specification

Essential specification

Scan type	Desktop / Bedio
Scan mode	Black&White/Gray/Color
Scan background	Black
Output image format	JPEG/BMP/PDF
Output type of image	File
Illumination	LED
Scan element type	CIS
Optical resolution	300×300DPI / 600×600DPI Optional
Output resolution	300DPI / 600DPI Optional
Image processing Part	Manual cutting, 7% correction, Contrast control, Saturation control, Gamma ray value control
Interface	USB2.0
Scan speed (A4 by edge ways)	A4 8-14W
Power supply mode	USB
Power consumption	Standby mode: 20.2W Working: <2.5W
Operation system	Windows XP, Vista, Windows 7, Windows 8, Windows 10
Dimension(W×D×H)	267×428×40.5mm
Net Wt	475g

Optional specification

Min supported document size	A8 (22mm×24mm)
Max supported document size	A4 (210mm×297mm)
Min supported document weight	50g/m²
Max supported document weight	125g/m²
Max supported document thickness	0.8mm

Environmental Parameters

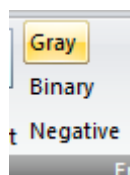
Temperature	Operating: 5°C~35°C Not operate: -10°~45°C
Relative humidity	Operating: 10%~90%RH, without condensation

* Please refer to the specification that we will not service the further outside of above specification is modified. Anshun Photoelectric Technology Co., Ltd. will reserve the final authority to it.

- No need to preprocess, scan once turning on
- High-speed data transmitting
- High resolution, CIS
- Max supported document size A4
- Professional software supported, easy-to-use
- Easy to process the scanned image

after

16. Gray & Binary & Negative



To have different effect of image as below :

Gray:

The Leader Of
Photoelectric Imaging Technology Service

• No need to preheat, scan after turning on
 • High-speed data transmitting
 • High-resolution CIS
 • Max supported document size A4
 • Professional software supported, easy-to-use
 • Easy to process the scanned image

KS1A03

Essential specification:

Scan type	Document feeding
Scan mode	Black/White/Gray/Color
Scan background	Black
Output image format	JPEG/BMP/PDF
Output image resolution	Print
Interface	USB
Scan element type	CIS
Optical resolution	300×300DPI / 600×600DPI (Optional)
Output resolution	300DPI / 600DPI (Optional)
Image processing	Manual setting, TR correction, Contrast control, Saturation control, Gamma any value control
Interface	USB 2.0
Power supply mode	Standby mode: 30.2W Working: 42.5W
Power consumption	Power-on mode: 30.2W (Max) Standby mode: 30.2W (Max)
Dimension (W×D×H)	267×448×140 (mm)
N.W.	4.7kg

Optional specification:

Max supported document size	A6 (51mm×74mm)
Max supported document size	A4 (210mm×297mm)
Max supported document weight	50g/m ²
Max supported document thickness	0.8mm

Temperature

Operating	5°C~35°C
Storage	-10°C~50°C
Relative humidity	Operating: 10%~90%RH without condensation

Please refer to the user manual for more information. For more information, please visit our website: www.xerox.com

Binary:

The Leader Of
Photoelectric Imaging Technology Service

• No need to preheat, scan after turning on
 • High-speed data transmitting
 • High-resolution CIS
 • Max supported document size A4
 • Professional software supported, easy-to-use
 • Easy to process the scanned image

KS1A03

Essential specification:

Scan type	Document feeding
Scan mode	Black/White/Gray/Color
Scan background	Black
Output image format	JPEG/BMP/PDF
Output image resolution	Print
Interface	USB
Scan element type	CIS
Optical resolution	300×300DPI / 600×600DPI (Optional)
Output resolution	300DPI / 600DPI (Optional)
Image processing	Manual setting, TR correction, Contrast control, Saturation control, Gamma any value control
Interface	USB 2.0
Power supply mode	Standby mode: 30.2W Working: 42.5W
Power consumption	Power-on mode: 30.2W (Max) Standby mode: 30.2W (Max)
Dimension (W×D×H)	267×448×140 (mm)
N.W.	4.7kg

Optional specification:

Max supported document size	A6 (51mm×74mm)
Max supported document size	A4 (210mm×297mm)
Max supported document weight	50g/m ²
Max supported document thickness	0.8mm

Temperature

Operating	5°C~35°C
Storage	-10°C~50°C
Relative humidity	Operating: 10%~90%RH without condensation

Please refer to the user manual for more information. For more information, please visit our website: www.xerox.com

Negative:

The Leader Of
Photoelectric Imaging Technology Service



Kingman

KS3A03

Technology specification

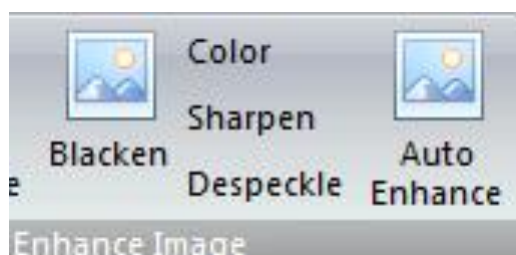
Essential specification	
Scan type	Document feeding
Scan mode	Black&White/Gray/Color
Scan background	Black
Output image format	JPEG/BMP/PDF
Output type of image	Print
Illumination	LED
Scan element type	CIS
Optical resolution	300~600DPI / 600~600DPI Optional
Output resolution	300DPI / 600DPI Optional
Image processing Part	Vertical cutting, Tilt correction, Contrast control, Saturation control, Gamma ray value control
Interface	USB2.0
Scan speed (A4 by brightness)	A4: 30~4M
Power supply mode	USB
Power consumption	Standby mode: 10.2W Working: <3.5W
Operation system	Windows, XP, Server2003, 2005, 2008, Vista, Win7, 32/64bit
Dimension(W×D×H)	267.5×68.5×40.5mm
N.W.	476g
Optional specification	
Min supported document size	A5 (52mm×74mm)
Max supported document size	A4 (210mm×297mm)
Min supported document weight	50g/m²
Max supported document weight	150g/m²
Max supported document thickness	0.8mm
Environmental Parameters	
Temperature	Operating: 5°C~35°C Not operate: -10°~45°C
Relative humidity	Operating: 10%~80%RH without condensation

• No need to preheat, scan once turning on
• High-speed data transmitting
• High-resolution CIS
• Max supported document size A4
• Professional software supported, easy-to-use
• Easy to process the scanned image



Please kindly accept our apology that we will not advise the further notice if above specification is modified. Jinming Photoelectric Technology Co., Ltd. will reserve the final authority to it.

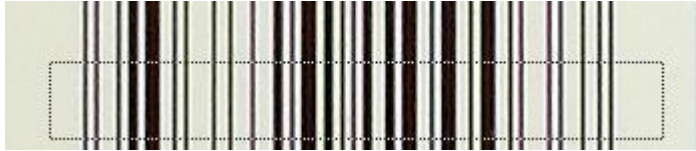
And also other Image enhance functions as below :



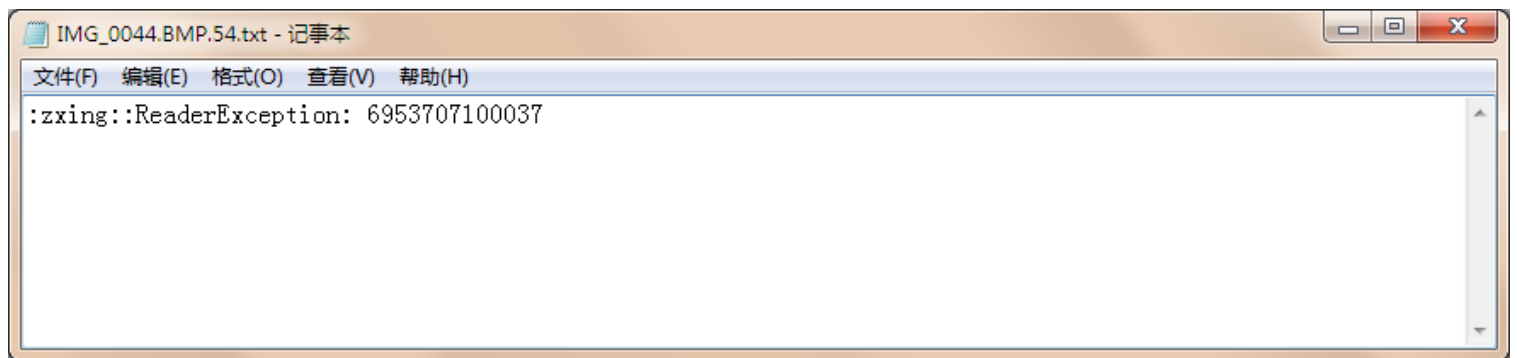
17. Bar code reading:



Click and catch the barcode.



And then it will show barcode Nr:



Besides editing scanned image,you can also choose pictures from your PC to edit them. Choose from the left side directory:

